



Public Services

128 North Second Street • Fourth Floor Courthouse • Yakima, Washington 98901
(509) 574-2300 • 1-800-572-7354 • FAX (509) 574-2301 • www.co.yakima.wa.us

VERN M. REDIFER, P.E. - Director

DATE: November 6, 2018

TO: FRH Enterprises, LLC, B7 Engineering, Adjacent Property Owners and Interested Agencies

FROM: Yakima County Public Services Department: Planning Division

SUBJ: CUP2018-00099/SEP2018-00047 - FRH Enterprises Concentrated Animal Feeding Operation
Notice of Application, Notice of Completeness and Notice of Environmental Review

DESCRIPTION OF PROPOSAL

Applicant: B7 Engineering on behalf of FRH Enterprises, LLC

Location: The project will be conducted on four parcels which total approximately 819 acres. The project will be located on the east side of Glade Road (Mabton-Bickleton Road), approximately 1.2 miles south of the intersection of Glade Road and Maple Street, and approximately 1.1 miles south of the City of Mabton, WA.

Tax Parcel No.: 220813-11001, 230818-12001, 230818-21001, and 230818-22001

Application Submittal Date: September 18, 2018 **Completeness Date:** November 1, 2018

Proposal: The proposal is to establish a new Concentrated Animal Feeding Operation (CAFO) and dairy. This project will consolidate existing operations currently located in the Grandview vicinity to this new facility on the subject parcels. Various structures will be constructed including cow shelters, milking parlor, feed storage, mixing, and distribution facilities and a waste handling facility. Structures will total approximately 70,000 square feet. Access to the dairy will be a private road from Glade Road.

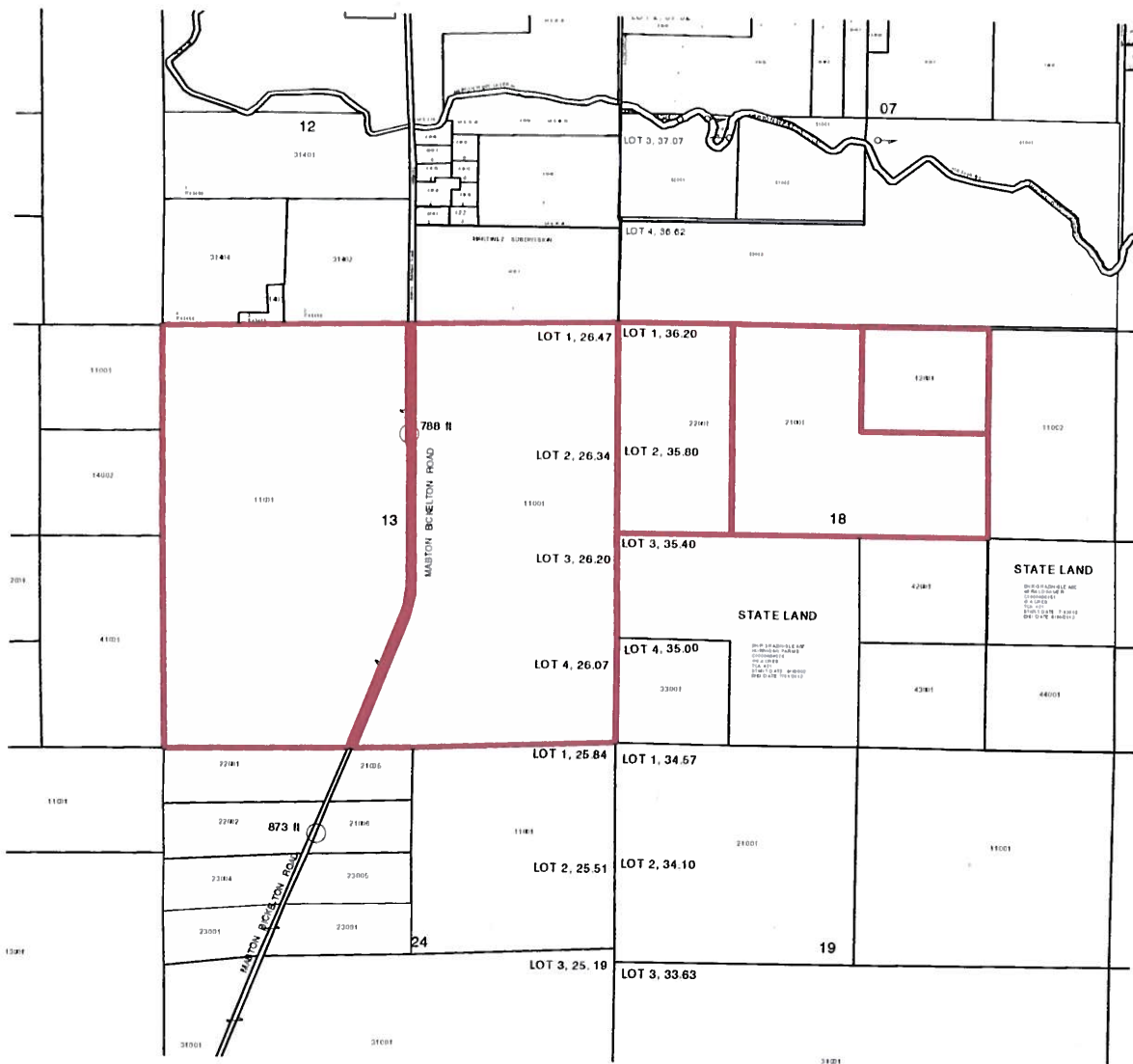
A land use application has been submitted near your property. To view the application materials and SEPA documents online go to: www.yakimap.com/permits/ or you can view a copy of application materials at the Planning Division on the 4th floor of the Courthouse. This proposal is subject to environmental review. The Planning Division is lead agency for this proposal under the State Environmental Policy Act (SEPA). **The Comments on the proposal will be used to prepare an environmental threshold determination, which will then be issued for additional comments.** Your views on the proposal are welcome, and any person may provide written comments on issues related to the proposal. **All written comments must be received by 4:00 p.m., November 20, 2018.** To be considered prior to making the final decision, all submitted comments must identify the name and physical or post office address of the sender. Mail your comments on this project to Yakima County Planning Division, 128 N. 2nd St., 4th Floor Courthouse, Yakima, WA 98901. Be sure to reference the above file number in your correspondence. Copies of the final decision will be sent to those who comment or may be obtained upon request. The final decision will contain specific appeal information and may be appealed within 14 days of the date of issuance. If you have any questions on this proposal,

If you are a person with a disability who needs any accommodation in order to participate in this program, hearing or service, you may be entitled to receive certain assistance at no cost to you. Please contact the ADA Coordinator at Yakima County no later than five (5) working days prior to the date service is needed.

Yakima County ADA Coordinator
128 N. 2nd Street, Room B27
Yakima, WA 98901
(509) 574-2210

7-1-1 or 1-800-833-6384 (Washington Relay Services for deaf and hard of hearing)

please call **Jacob Clay** or **Byron Gumz**, at (509) 574-2300 or 1-800-572-7354 ext. 2300.



If you are a person with a disability who needs any accommodation in order to participate in this program, hearing or service, you may be entitled to receive certain assistance at no cost to you. Please contact the ADA Coordinator at Yakima County no later than five (5) working days prior to the date service is needed.

Yakima County ADA Coordinator
128 N. 2nd Street, Room B27
Yakima, WA 98901
(509) 574-2210

7-1-1 or 1-800-833-6384 (Washington Relay Services for deaf and hard of hearing)